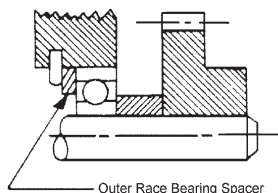
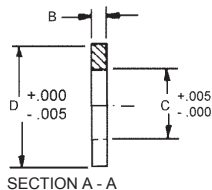
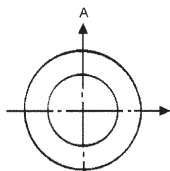


# BEARING SPACERS

TYPE	SHAFT SIZE	MATERIALS
<b>OUTER RACE</b>	<b>5/32 TO 1-1/8</b>	<b>18-8 STAINLESS STEEL OR ANODIZED ALUMINUM</b>



Outer Race Bearing Spacer



SECTION A - A

STAINLESS STOCK NO.	ALUMINUM STOCK NO.	D	C	B
SS3-51	-	.153	.088	.003
SS3-52	-			.005
SS3-53	-			.007
SS3-54	-			.010
SS3-55	-			.020
SS3-56	-	.178	.123	.003
SS3-57	-			.005
SS3-58	-			.007
SS3-59	-			.010
SS3-60	-			.020
SS3-50	-	.248	.167	.003
SS3-1	-			.005
SS3-32	-			.007
SS3-2	-			.010
SS3-71	-			.020
SS3-33	-	.310	.206	.003
SS3-3	-			.005
SS3-34	-			.007
SS3-4	-			.010
SS3-72	-			.020
SS3-35	-	.373	.253	.003
SS3-5	-			.005
SS3-36	-			.007
SS3-6	-			.010
SS3-7	-			.020
SS3-8	SS3-8-A			.032
SS3-9	SS3-9-A			.062
SS3-10	SS3-10-A			.125
SS3-41	SS3-41-A			.250
SS3-42	SS3-42-A			.375
SS3-43	SS3-43-A			.500
SS3-37	-			.003
SS3-11	-			.005
SS3-38	-			.007
SS3-12	-			.010
SS3-13	-			.020

STAINLESS STOCK NO.	ALUMINUM STOCK NO.	D	C	B
SS3-14	SS3-14-A	.498	.378	.032
SS3-15	SS3-15-A			.062
SS3-16	SS3-16-A			.125
SS3-44	SS3-44-A			.250
SS3-45	SS3-45-A			.375
SS3-46	SS3-46-A			.500
SS3-39	-	.623	.503	.003
SS3-17	-			.005
SS3-40	-			.007
SS3-18	-			.010
SS3-19	-			.020
SS3-20	SS3-20-A			.032
SS3-21	SS3-21-A			.062
SS3-22	SS3-22-A			.125
SS3-47	SS3-47-A			.250
SS3-48	SS3-48-A			.375
SS3-49	SS3-49-A			.500
SS3-23	-	.685	.562	.016
SS3-24	-			.032
SS3-25	-			.062
SS3-61	-	.873	.687	.003
SS3-62	-			.005
SS3-63	-			.007
SS3-64	-			.010
SS3-26	-			.016
SS3-65	-			.020
SS3-27	SS3-27-A			.032
SS3-28	SS3-28-A			.062
SS3-67	SS3-67-A			.125
SS3-68	SS3-68-A			.250
SS3-69	SS3-69-A			.375
SS3-70	SS3-70-A			.500
SS3-29	-	1.120	.937	.016
SS3-30	-			.032
SS3-31	-			.062

Sold in packages of 10.

## Also available

STOCK NO.	DESCRIPTION OF KIT
KIT-SS1	STAINLESS STEEL SHAFT SPACERS, INNER RACE, 1/8, 3/16 AND 1/4" SHAFT SIZES (330 PIECES)